



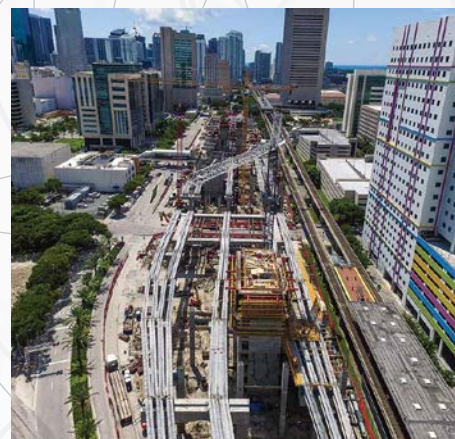
ROAD AND BRIDGE CONSTRUCTION

Quest works closely with Construction Engineering & Inspection (CEI) firms, which partner with the contractor and infrastructure owner to manage and inspect all aspects related to roadway construction projects. Where do we fit in? We are the link between the project team and the public; our specialty is to get in the shoes of your typical stakeholder or homeowner who might have a question or two about how a construction project might affect his drive, or his sleep.

We take a proactive approach by participating in all construction progress meetings and getting to know the intricacies of each project — down to construction plan details and the coordination of adjacent utilities, for example. We make it our business to keep you and your stakeholders informed, and we keep everyone out of trouble. This entails various categories of information and communications approaches that best fit each, depending on whether the project is evaluating the feasibility of a future road; determining which of a handful of proposed routes will cause the least social and environmental impacts; designing the roadway and all related

interchanges; or breaking ground for new roadway or new travel lanes.

The usual information for a construction project can range from single-lane closure and pile driving alerts, to announcing the opening of a new exit ramp on the highway, which we do while coordinating with individual stakeholders and whole entities like homeowners' associations, to relay their concerns or requests to the project team. You can call us the middleman — or -woman — between the needs of the public and the responsibilities of the project team. But we also go beyond that.



How do we make it all happen? Some essentials, and added services, are:

- **Project documentation**
- **Compliance**
- **Mass-distributed public information**
- **Public information meetings and public hearings**
- **Utility coordination**
- **Project collateral**
- **Websites**
- **Photography/ drone photography and project videography**
- **Ribbon cutting events**